



# National Focal Point

Introduction of the NFP and the Bilateral Fund at National Level

Markéta Mlejnková

5<sup>th</sup> April 2013 – INFORMATION DAY PROGRAMME CZ09

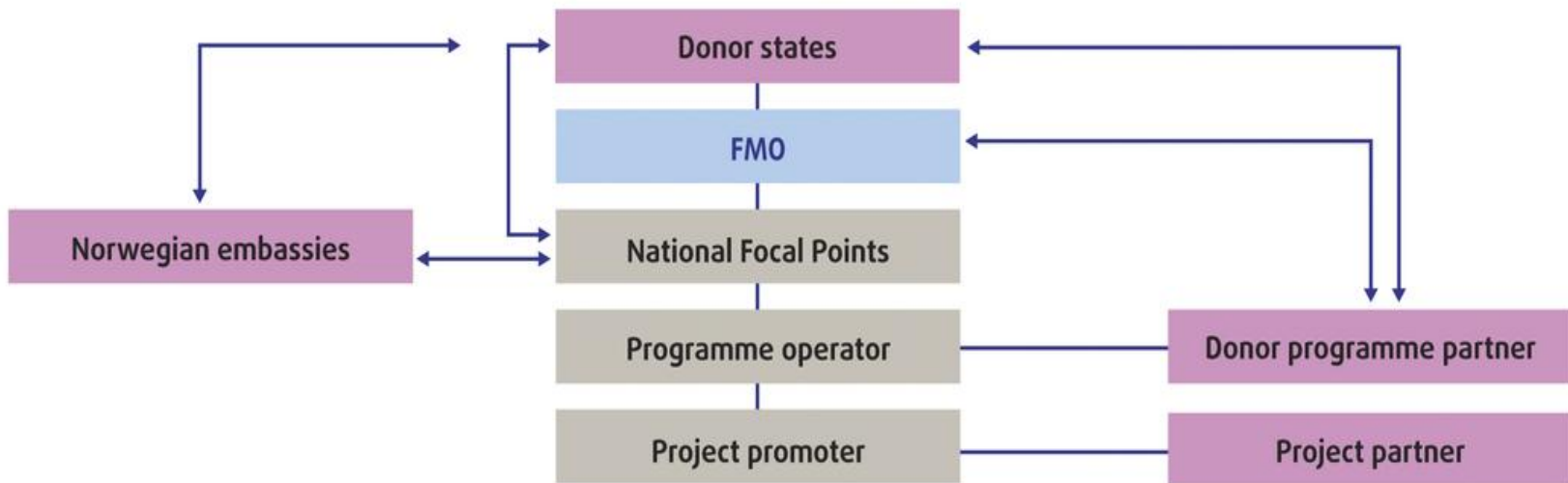
- **National Focal Point**
  - Introduction and our role
- **Bilateral Fund at National Level**
  - Eligible initiatives and applicants
  - Bilateral Fund at programme level
  - Procedure for submitting applications
- **Q&A**

# National Focal Point

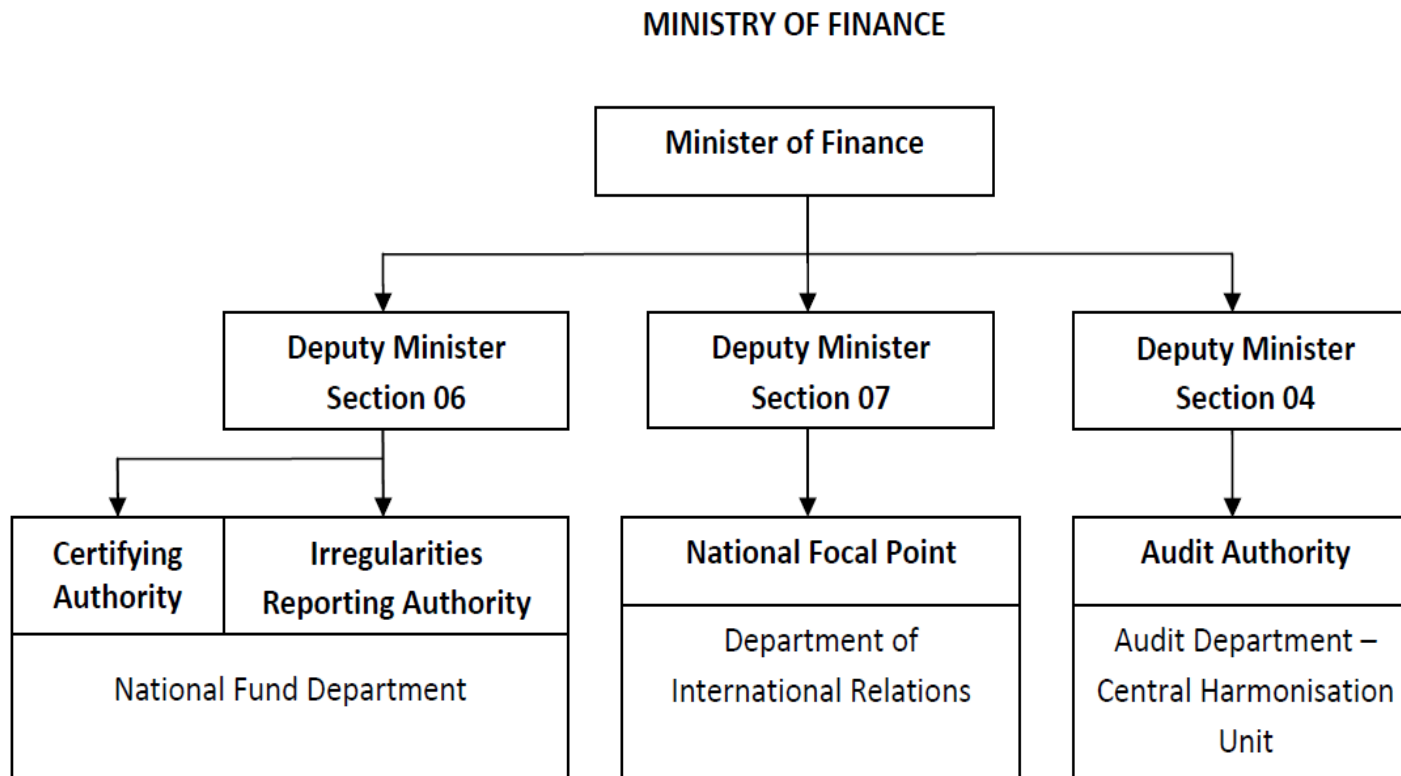
- represent the beneficiary state  
(communication with the FMC and the NMFA)
- overall responsibility for the implementation of the grant schemes
- responsible for the management and control of programmes
- Regulation – article 4.3

# National Focal Point

## ORGANISATIONS INVOLVED IN MANAGEMENT OF THE GRANTS



# National Focal Point



# Bilateral Fund at National Level



- Open Call - 21 January 2013
- EUR 150,000 (3.720.000 CZK)
- Rolling call (31 December 2014)
- Maximum grant amount
  - EUR 15,000 (372.000 CZK)

# Bilateral Fund at National Level



## ELIGIBLE INITIATIVES

One-time short-term initiatives

- initiatives that lead to the
  - establishment of cooperation
  - seeking partners
  - sharing experience, knowledge, examples of best practice and know-how
  - strengthening the existing cooperation
  - extending the overall mutual awareness in the participating countries
  
- seminars, conferences, workshops
- studies, data surveys and analyses
- study trips, business visits
- information activities of various kinds, etc.

# Areas of support:



## **ENVIRONMENTAL PROTECTION AND MANAGEMENT**

1. Integrated Marine and Inland Water Management;
2. Biodiversity and Ecosystem Services;
3. Environmental Monitoring and Integrated Planning and Control;
4. Reduction of Hazardous Substances

## **CLIMATE CHANGE AND RENEWABLE ENERGY**

5. Energy Efficiency;
6. Renewable Energy;
7. Adaptation to Climate Change;
8. Maritime Sector;
9. Environmental and Climate Change-related Research and Technology

## **CIVIL SOCIETY**

10. Funds for Non-Governmental Organisations

## **HUMAN AND SOCIAL DEVELOPMENT**

11. Children and Youth at Risk;
12. Local and Regional Initiatives to Reduce National Inequalities and to Promote Social Inclusion;
13. Public Health Initiatives;
14. Mainstreaming Gender Equality and Promoting Work-Life Balance;
15. Institutional Framework in the Asylum and Migration Sector

## **PROTECTING CULTURAL HERITAGE**

16. Conservation and Revitalisation of Cultural and Natural Heritage;
17. Promotion of Diversity in Culture and Arts within European Cultural Heritage

## **RESEARCH AND SCHOLARSHIP**

18. Research within Priority Sectors;
19. Scholarships

## **CARBON CAPTURE AND STORAGE**

Carbon Capture and Storage (CCS)

## **GREEN INDUSTRY INNOVATION**

21. Green Industry Innovation

## **DECENT WORK AND TRIPARTITE DIALOGUE**

22. Global Fund for Decent Work and Tripartite Dialogue

## **RESEARCH AND SCHOLARSHIP**

23. Bilateral Research Cooperation;
24. Bilateral Scholarship Programme

## **HUMAN AND SOCIAL DEVELOPMENT**

25. Capacity-building and Institutional Cooperation between Beneficiary State and Norwegian Public Institutions, Local and Regional Authorities;
26. Cross-border Cooperation;
27. Public Health Initiatives;
28. Mainstreaming Gender Equality and Promoting Work-Life Balance

## **JUSTICE AND HOME AFFAIRS**

29. Domestic and Gender-based Violence



# Bilateral Fund at National Level



## Eligible Applicants

- Programme Operators and Programme Partners cooperating with institutions from donor states, Donor programme partners (DPP) /including the Council of Europe (CoE)/
- Applicants and partners from donor states of pre-defined projects (preparation phase)
- National Focal Point (NFP)
- **Other institutions within whose competence the programme areas fall (=active in relevant PA – at least 1 year)**

# Bilateral Fund at Programme Level

- responsibility – Programme Operator
- 1.5% of the eligible expenditure of the programme
- Two measures:
  - (a) **for potential applicants:** the search for partners prior to/during the preparation of a project application,
  - (b) **for project promoters:** networking, exchange, sharing and transfer of knowledge, technology, experience and best practice

# Bilateral Funds

## BF at Programme Level („A“)

- establishment of/ strengthening bilateral cooperation
- preparation of project applications
- Applicants – potential applicants within the open call of particular programme

## BF at National Level

- establishment of/ strengthening bilateral cooperation
- proposed initiative should be beneficial to the Czech Republic in the respective area
- Applicants - institutions with competences in the selected programme areas

# Bilateral Fund at National Level



## Procedure for submitting application

*Guideline for applicants and recipients from the Fund*

- Rolling open call
- Czech entities: in Czech, in CZK
- Foreign entities: in English, in EUR, in cooperation with Czech entity
- Form – 1 original, 1 el.version (**Guidelines**)
- 30 days before the first planned activity
- Assessment – formal and detail (**criteria**)
  - Approval (Grant Award Letter)
  - Refusal (letter with reasons)

# More information



[www.eeagrants.cz](http://www.eeagrants.cz), [www.norwaygrants.cz](http://www.norwaygrants.cz)

CFA1 : Centre for Foreign Assistance –  
Programming and Coordination Unit  
([czp@mfcrcz.cz](mailto:czp@mfcrcz.cz))

*Thank you for your attention*